

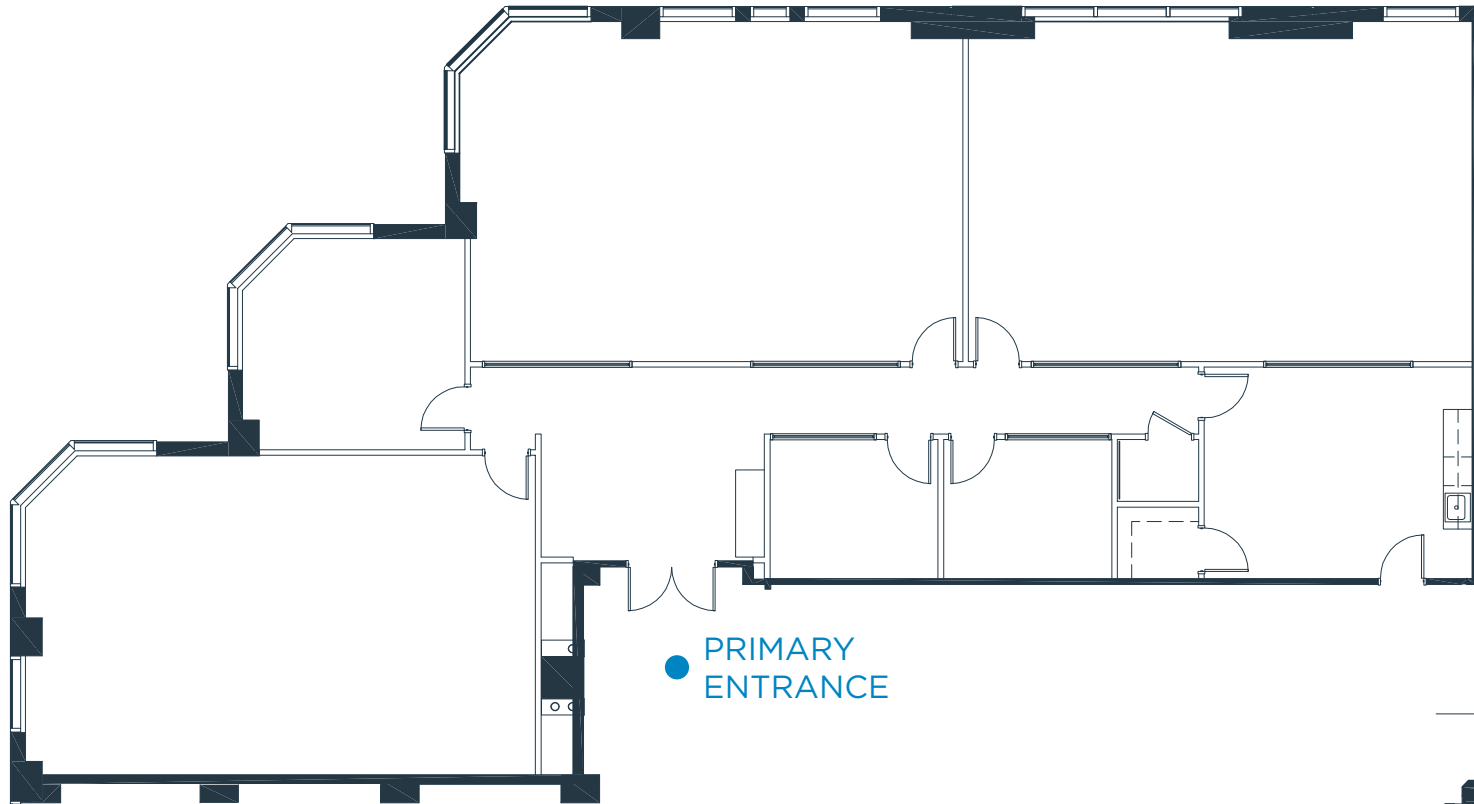
CROWN POINTE

POTENTIAL
ABOUND

SUITE 190

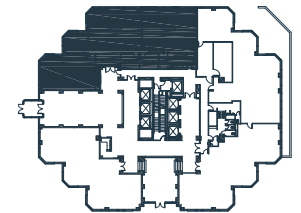
1050

4,459 RSF



● PRIMARY
ENTRANCE

KEY PLAN



NOTE: Drawing Not to Scale

For leasing information, contact:

Zach Wooten
zach.wooten@transwestern.com
404.842.6540

Stephen Clifton
stephen.clifton@transwestern.com
404.842.6538

 **TRANSWESTERN**[®]
Experience Extraordinary

 **PACIFIC OAK**

CROWNPOINTE.COM